

## With the top flow OEE-Module for SAP® ERP to discover hidden potentials

The term “Overall Equipment Effectiveness” (OEE) describes a from the Japan Institute of Plant Maintenance established key figure. It is one of the results in the course of many years of the TPM (Total Productive Maintenance) concept development

As a central key figure OEE serves as measurement, analysis and increase of machinery- and equipment productivity and delivers thereby comprehensible and influence-able values.

OEE puts the added value of a resource in the center.

A precise examination of the used capacity, the realized speed and the accomplished quality takes place.

Losses are exhausting and affect the work performance. Therefore they have to be identified and eliminated.

OEE concentrates not like other key figures on that, what was accomplished but on the unaccomplished and creates transparency. This transparency enables to discover available improvement potential.

The OEE-key figure of equipment is defined as the product of the following three factors:

- Availability
- Performance
- Quality



The OEE Overview provides a direct comparison of individual or grouped resources on a top-level.

top flow GmbH  
IT Solutions

Kaiserstrasse 58  
88348 Bad Saulgau  
Germany  
T: +49 / 75 81 / 202 95 – 0  
F: +49 / 75 81 / 202 95 – 19  
info@top-flow.de  
www.top-flow.de

OEE-Overview: Display of individual machine results

The developed OEE-Module from **top flow** does not need an additional technology – neither for the data management nor for the analysis. It is a completely in the SAP® ERP-System integrated approach.

The confirmation data of the SAP®-System are being analyzed, all relevant OEE information are being determined and calculated. The data management of OEE key figures as well as their original values exist in a reshaped form. Subsequent OEE User-Analyses are flexible and extremely performant.

The Analysis-Tool itself was realized as a web-based application and can be embedded flexibly in a web- or portal environment.

The complete functionality is already available for ERP-customers. Alternative technologies like SAP® BI or BO can be used as well.

The OEE-Detail analysis of the availability can be shown for example, in the following levels:

- Aggregated description of all times (productive, set up, malfunctions per reason).
- Detailed description of malfunctions on material level with sort and filter options.
- Detail description according to chosen aggregation, for example, single value for the day.

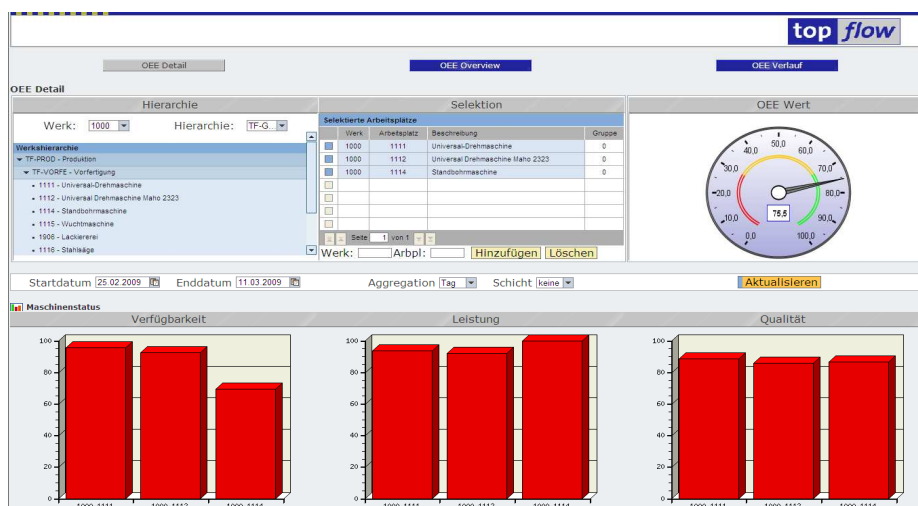
The advantage of the detailed description is, that the priorities of the need for action are clearly shown.

A fast and efficient decision-making is possible. The determined improvement measures can be realized fast. The increase of the OEE key figure is the result of successful loss elimination.

The OEE-Cockpit is based on three main analyses:

- OEE-Detail analysis
- OEE-Overview
- OEE-Developing analysis

For each of those analyses there are branches in all details available.



**top flow GmbH**  
 IT Solutions

Kaiserstrasse 58  
 88348 Bad Saulgau  
 Germany  
 T: +49 / 75 81 / 202 95 – 0  
 F: +49 / 75 81 / 202 95 – 19  
 info@top-flow.de  
 www.top-flow.de