

The breakthrough for multi-variant production/acquisition.



SAP® - Variant Configuration in top form.

The High-End Variant Configuration of top flow integrates the SAP® standard into a functional completely new environment. Thereby there appear many new advantages:

Multi-variant production / acquisition need individual tools to guarantee an optimal process support. The administration of master data is often not possible or complicates the process enormously.

The SAP® standard functionality, which applies itself to this topic, is the so-called "Variant Configuration". The estimations, why the use of this technique is out of question for many companies, are the following:

- functional: too little scope
- handling offers too little comfort
- spread object dependencies in separate program language
- maintenance and progression too complicated
- only controllable through experts
- Variant Configuration: limited make-to-order-production



The individual configuration of a user interface conforms exactly to the needs of a user or of the problem that needs to be solved.



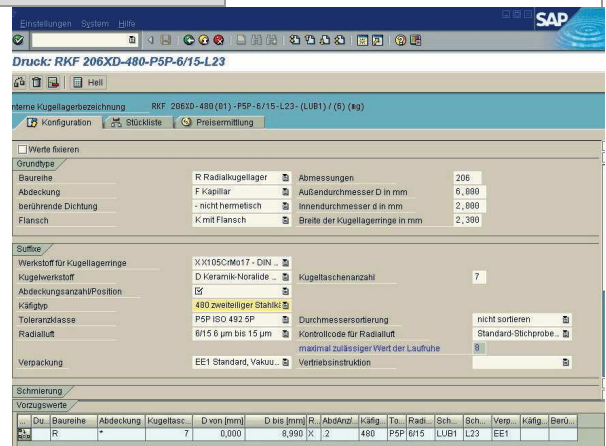
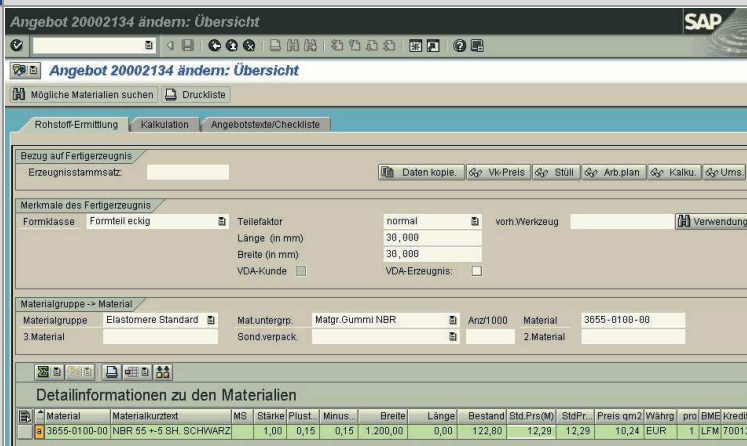
Modern dialogues carry through the application.



The interaction is identified individually.



The goal is the maximum support of the user at his task.



Whether interactive product costing, price finding, availability checks, document-integration or other requirements - the open scope allows integration of almost all functions and information of its SAP®-system in the configuration dialogue!

Two configuration examples from experience.



The Variant-Engine offers among other things an alternative item administration of quotation items. The product description (configuration) will be entered only once through the advisor. Alternative items with other quotation quantities will be generated through the system on request. An overview gives information about the development of the marginal return on the basis of inquired batch sizes.

Vrg.	AnzPlatz	Kurztext Vorgang	Nutz.	z.Rüst.	Einh.	z. Ru.	Einh.	z. Masc.	Einh.	z. Pers.z.	El.	Anz.Pers.	z.	Wa.
0010	1100	Materialbereitstellung		0	MIN	0	MIN	0	MIN	0	MIN	0,0	0	EUR
0020	1504	Querschneidmaschine		10	MIN	10	MIN	1,855	MIN	1,855	MIN	1,0	0	EUR
0030	1600	Schnefschnitt bis 60 mm		10	MIN	10	MIN	17	MIN	17	MIN	1,0	0	EUR
0040	1620	Sieben		0	MIN	0	MIN	0	MIN	0	MIN	1,0	0	EUR
0050	16301	Versand-Auslesen		0	MIN	0	MIN	0	MIN	5	MIN	1,0	1	EUR
0060	16309	Versand		0	MIN	0	MIN	0	MIN	0	MIN	0,0	0	EUR
					20	MIN		20	MIN	18,655	MIN		23,655	MIN
														1

Kategorie	Bezeichnung	Bezeichnung	Erhöhung (%)	z.	Wert/Währung
1	Materialkosten	Materialkosten - 3655-0100-00			12,11 EUR
2	Gesamt Material	Materialkosten			12,11 EUR
2	Gesamt Material	Materialgemeinkosten	10,00		1,21 EUR
2	Gesamt Material	Fixe Materialgemeinkosten			1,50 EUR
2	Gesamt Material				14,82 EUR
3	Gesamt Fertigung	Fertigungskosten			11,25 EUR
3	Gesamt Fertigung	Fertigungsgemeinkosten	10,00		1,13 EUR
3	Gesamt Fertigung				12,38 EUR
4	Belegschaft	Herstellkosten			27,20 EUR

Function example:
Interactive product costing within the configuration dialogue.

We optimize the processes in your company with SAP®!

- ➔ The complete logic of a product is defined over table controlling.
- ➔ Maintenance and enhancements can therefore happen through table maintenance (customizing)!
- ➔ Central processing of table logic in an open ABAP-environment.
- ➔ No programming because of changes and enhancements necessary.
- ➔ The technology allows illustration of the most complex coherences.

Experiences of our customers:

„The tedious and very complex creation of master data through our experts could be dropped completely. Therefore the process got so lean, that we are able to perform even orders in the smallest batch size profitably, which we had to reject in former times.“

Common: FEFCO 0201, Verpackungsart: WK: Wellkiste, Länge: 390, Breite: 390, Höhe: 390, Nutzen: ...

Sorte: Wellenart: BC: BC-Welle, VDW-Sorte: ..., Verschlussart: 2P: 2-Punkt-Klebung, Lascherverlängerung: ...

Druck: Drucktyp: N normaler Druck, Anzahl Farben außen: ..., Anzahl Farben innen: ...

Function example:
Integration of illustrations (documents) in the configuration dialogue.

„The Know-how of our product development gets directly provided to all order advisors through the configuration of top flow. Not only, that we thereby achieve a reproduction, but simultaneously unburden our specialists of routine work.“

- ➔ Support of the make-to-order as well as the anonymous production.
- ➔ The Variant-Engine of **top flow** connects the comfortable High-End Variant Configuration with the possibility to create master data ready for series production at the flick of a switch.

„Two years ago we had cancelled a configuration project, with the realization, that our products are not configurable with the SAP®-standards. Too complex! Thanks to the top flow technology, we now have established an expert system, which satisfies highest demands.“

- ➔ During the quotation / order processing, the lead through the expert-system allows even complex product definitions through the advisor.
- ➔ Complete do-ability- and plausibility examinations through the system. Thereby elimination of error sources.
- ➔ Guarantee of objective and functional correct product configurations already through the order advisor.

„Performance and quality of our quotation handling was enormously increased.“

„The Variant Engine of top flow is a brilliant tool, which makes the Variant Configuration usable, even for us, an anonymous manufacturer.“

- ➔ Complete closure of the process from ONE employee in ONE step. Example: quotation definition and calculation of the sales department without necessary inclusion of construction, logistic and calculation.
- ➔ In case of order: dynamic creation of all necessary master data through the system. Omission of manual operations with simultaneous raise of data quality.

top flow GmbH
IT Solutions

Kaiserstrasse 58
88348 Bad Saulgau
T: +49 / 75 81 / 202 95 - 0
F: +49 / 75 81 / 202 95 - 19
info@top-flow.de
www.top-flow.de